

CASE STUDY

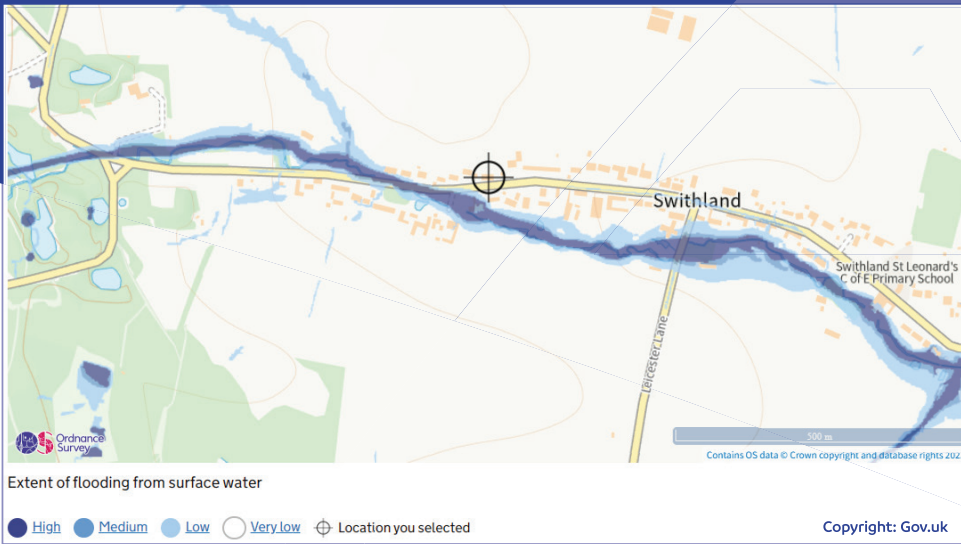
**Leicestershire County Council**



Swithland Property Flood Resilience Scheme



Flood Barrier Side Post Cover Plates



Perimeter Demountable Aluminium Flood Barrier to Conservatory

**Location:** Swithland, Leicestershire

**No. Properties:** 22no. (16no. of which were Grade II Listed properties)

- Services:**
- Product Selection Survey
  - Design & Manufacture
  - Installation
  - Demonstration
  - Maintenance

**Dates:** March 2022 – June 2023

Find out more about the different flood protection options available to you:



1988 - 2023



01792 561117

sales@lakesidefloodsolutions.co.uk

Bruce Road, Fforestfach Industrial Estate, Swansea SA5 4HS

www.lakesidefloodsolutions.co.uk



# LAKESIDE FLOOD SOLUTIONS

## Background:

There are several contributory elements to previous flood events in Swithland; a combination of excessive rainfall, significant run-off from surrounding land, large impermeable areas, profiling of surrounding land, and overloading of local drainage assets. One of the measures implemented by Leicestershire County Council to mitigate the future risk of flooding has been in the form of the Property Flood Resilience (PFR) Grant.

## Services:

Lakeside have increased the flood resilience to 22no. properties as part of the scheme.

We provided end-to-end support for Homeowners to provide guidance through the grant funding process, from survey to installation, training and maintenance. Independent post-installation surveys and reports were also arranged to verify the works carried out and provide independent assurance in terms of quality and suitability of the measures installed.

## Products:

Flood defences covered all potential points of water ingress, including Door & Opening Defence, Brick Defence, Sewage Defence and Wall Defence.

A range of both manual measures, such as Flood Barriers, and passive measures, such as Flood Doors were installed, depending on Homeowner preferences and property type.



Grade II Listed Property - Demountable Aluminium Flood Barrier (Not Deployed)



Grade II Listed Property - Demountable Aluminium Flood Barrier

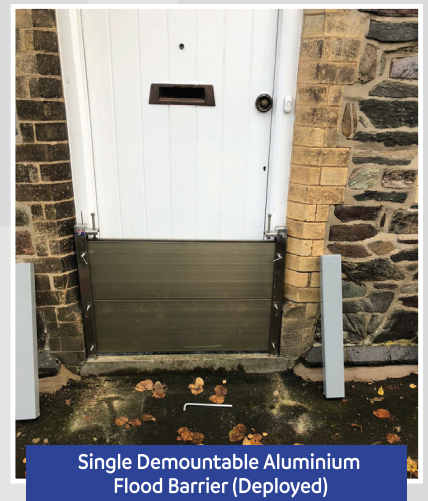
## Testimonial:

*"I have received positive feedback about the staff used by Lakeside - considerate, polite, helpful and from my own observations, I can see some quality fitments in doorways."*

David, Local Flood Warden  
December 2022



Single Demountable Aluminium Flood Barrier (Not Deployed, with Side Post)



Single Demountable Aluminium Flood Barrier (Deployed)



01792 561117

[sales@lakesidefloodsolutions.co.uk](mailto:sales@lakesidefloodsolutions.co.uk)

Bruce Road, Fforestfach Industrial Estate, Swansea SA5 4HS

[www.lakesidefloodsolutions.co.uk](http://www.lakesidefloodsolutions.co.uk)